

HP Scanjet Enterprise 7500 Flatbed Scanner

Solution and Feature Guide



CONTENTS

- Getting to know the HP Scanjet Enterprise 7500 Flatbed Scanner 1
 - Product walk-around.....2
- Top features3
 - Fast, easy scanning.....4
 - Hassle-free document management.....6
 - Reliable, time-saving features.....8
 - Worry-free HP solution.....9
- A—Technical specifications 10
- B—Ordering information 12

Contact information

Hewlett-Packard Company

300 Hanover Street

Palo Alto, CA 94304-1185

Phone: (650) 857-1501

Fax: (650) 857-5518

Web address: www.hp.com

Contact HP by country:

http://welcome.hp.com/country/us/en/wwcontact_us.html

GETTING TO KNOW THE HP SCANJET ENTERPRISE 7500 FLATBED SCANNER

Welcome to the Solution and Feature Guide for the new HP Scanjet Enterprise 7500 Flatbed Scanner. Designed with workgroups in mind, this workhorse flatbed scanner features robust paper handling, rapid scanning, seamless integration into existing workflows, and a comprehensive suite of scanning software.

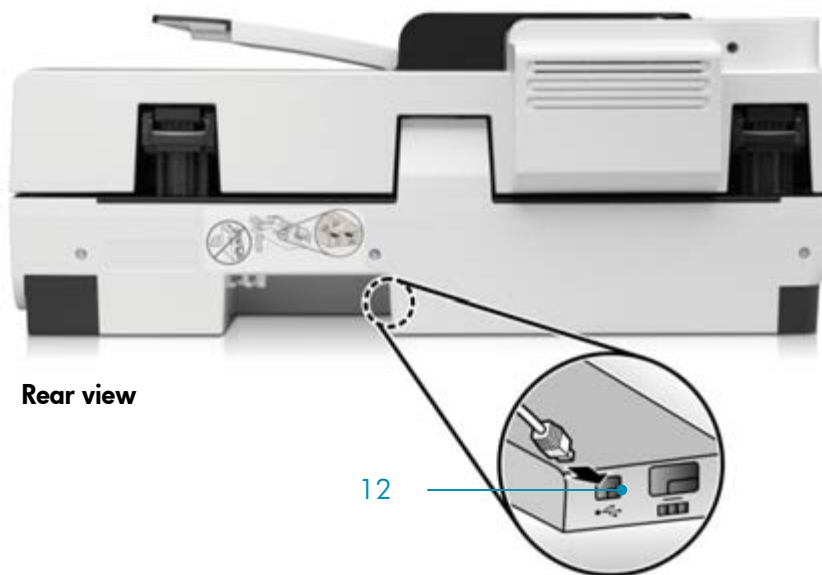
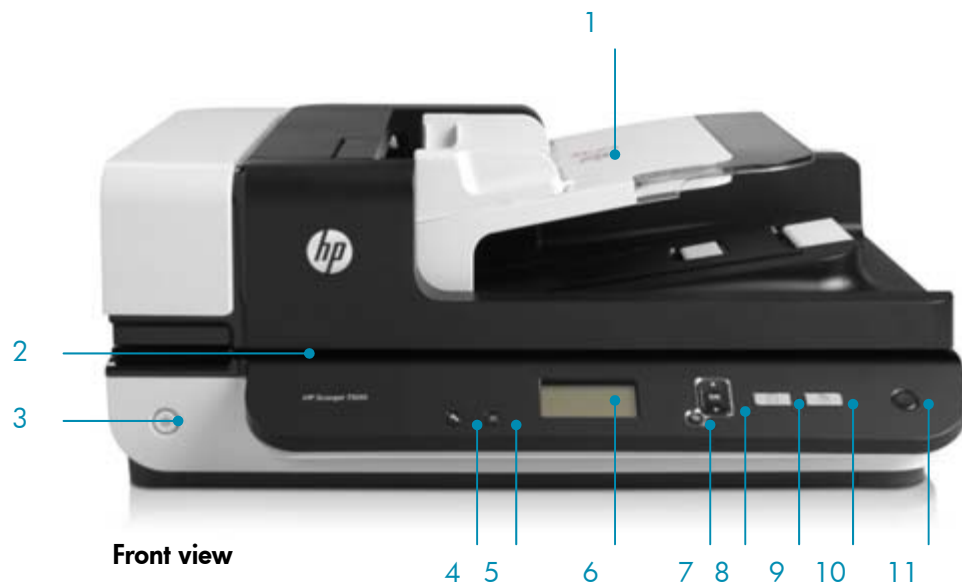
Finding information

This guide provides information to help you learn about the product's features and functionality. For information on setting up the device, please refer to the *HP Scanjet Enterprise 7500 Flatbed Scanner Getting Started Guide*. For details on using the device, see the *HP Scanjet Enterprise 7500 Flatbed Scanner User Guide*. For questions or technical detail on HP scanning technologies, please use the contact information on page ii to reach an HP representative.



Product walk-around

- 1 100-sheet automatic document feeder (ADF)
- 2 Legal-size flatbed scanner
- 3 Power button
- 4 Tools button
- 5 Cancel button
- 6 4-line LCD display
- 7 Back button
- 8 OK/Select button and arrow buttons for selecting scan profiles
- 9 Scan Simplex button
- 10 Scan Duplex button
- 11 Sleep button
- 12 Built-in Hi-Speed USB 2.0 port



Highlights

- Fast duplex scanning up to 50 ppm/100 ipm¹
- 100-page automatic document feeder easily tackles a wide variety of paper types, thicknesses, and sizes—up to 864 mm/34 in long
- Legal-size flatbed scanner for books, ledgers, and more
- Robust duty cycle of up to 3,000 pages per day
- Up to 600 dpi resolution
- Includes Kofax® VirtualReScan Pro® for optimized scans on the first pass
- Built-in HP Precision Feed technologies keep scan projects running uninterrupted
- Includes HP Smart Document Scan Software and advanced OCR (I.R.I.S. Readiris™ Pro) for powerful desktop document capture
- Support for HP Web Jetadmin
- Standard one-year warranty; additional warranty and service extension options are also available from HP Total Care

TOP FEATURES

The top features of the HP Scanjet Enterprise 7500 Flatbed Scanner are highlighted in the table below. For a more in-depth look at these features and their benefits, see the pages that follow.

Fast, easy scanning	Two-sided scanning at up to 50 ppm and 100 ipm ¹
	100-sheet automatic document feeder for hands-free scanning of stacks of documents in sizes from 148 mm (5.8 in) to 864 mm (34 in) long
	Legal-size flatbed for scanning books, ledgers, notes and more
	Large 4-line LCD display allows easy scanning profile creation and selection
	Impressive black-and-white or color scans at up to 600 by 600 dpi resolution
	Included I.R.I.S. Readiris Pro OCR turns scanned documents into editable text and saves them in a variety of file formats
Hassle-free document management	Included HP Smart Document Scan Software 3.0 lets you create dozens of scan profiles with a variety of options such as paper size, resolution, file format, and destination
	Included Nuance® PaperPort® software makes it easy to create a personal archival and document management system right out of the box ²
	Works with existing document management software using the included TWAIN, ISIS®, or WIA drivers
	The device and the included Kofax VirtualReScan Pro software work together for increased OCR accuracy and optimized scans on the first pass
Reliable, time-saving features	HP Precision Feed technologies accurately feed and capture scans, even mixed stacks of various weights and sizes
	Supports industry-leading HP Web Jetadmin for efficient fleet management ³
Worry-free HP solution	Robust duty cycle of up to 3,000 pages per day
	One-year standard warranty, backed by HP Customer Care
	Additional warranty and service extension options available from award-winning HP Total Care ⁴

FAST, EASY scanning

Get impressive speeds and excellent image results every time for a variety of project types and sizes. Easily create and launch scanning profiles using the simple control panel.

Capture documents quickly

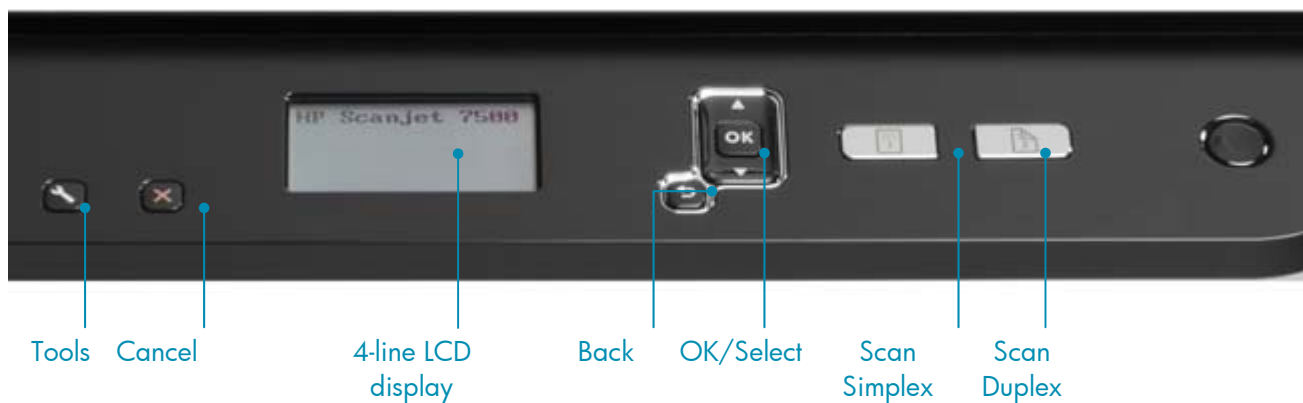
Perform fast, single-pass, duplex scanning at speeds of up to 50 pages per minute (ppm) and 100 images per minute (ipm).¹ The 100-page automatic document feeder (ADF) quickly turns stacks of hard copies into digital files, while you attend to other work. Tackle a wide variety of paper types, thicknesses, and sizes—from 148 mm (5.8 in) to 864 mm (34 in) long.

Quickly and easily capture both sides of a scanned document. With the ADF, you can scan two-sided documents without standing by the scanner and handling every page.

Scan books, ledgers, magazines, and information from thick, bound files using the legal-size flatbed scanner.

Intuitive control panel

The scanner's user-friendly control panel display and buttons make it simple to quickly start a scan or configure scanner settings.



The **Tools** button opens the HP Scanner Tools Utility where you can:

- Configure the list of profiles on the scanner front panel
- Create scan profiles that use third-party scanning software
- Change the scanner power management settings
- View information about scanner settings, status, and maintenance

Use the **OK** button and arrows to scroll through the scan profiles and view their details on the four-line LCD display. Scan profiles provide a fast, efficient way to select the settings for frequently-performed scanning tasks. For more information on creating scan profiles, see HP Smart Document Scan Software 3.0 on page 6.

Quickly launch scans from the control panel using the **Scan Simplex** button for single-sided scans or the **Scan Duplex** button for double-sided scans.

Professional imaging

Produce impressive black-and-white or color scans at up to 600 by 600 dpi resolution and 48-bit color depth. Optimize scans for text, images, or mixed text and images, and adjust sharpness, brightness or darkness, and contrast. Get the scanning results you need:

- Save scans in a wide range of **file formats**, including BMP, JPG, TIFF, TIFF (compressed), multi-page TIFF, PNG, PDF (normal, normal with images, searchable image-only, MRC), PDF/A, RTF, TXT, UNICODE, HTM, DOC, WPD, XML, XLS, OPF, and XPS.
- Get better readability with **background removal**. This setting is useful when the original is on colored paper or is two-sided. Removing the background can prevent blurring or streaking in the output image.
- Automatically detect and remove blank pages in scanned output with **blank page suppression**.
- Choose from **three color modes**: color, black-and-white, and grayscale.
- Remove colors from scanned documents or images by filtering out a color channel (red, green, or blue). **Color drop-out** can improve the accuracy of optical character recognition (OCR) results, enhance readability, and reduce the size of scanned files.

I.R.I.S. Readiris Pro OCR

The included Readiris Pro OCR software has the power and accuracy to convert scanned office documents into editable text and shareable digital files. Readiris Pro allows you to edit text from scanned files and easily save scans as Microsoft® Office, PDF, or HTML files. With Readiris Pro, you can quickly convert any document into text, reproduce the original layout, and easily convert documents into different formats supported by applications such as Microsoft Word and Excel, and Adobe Acrobat.

HASSLE-FREE document management

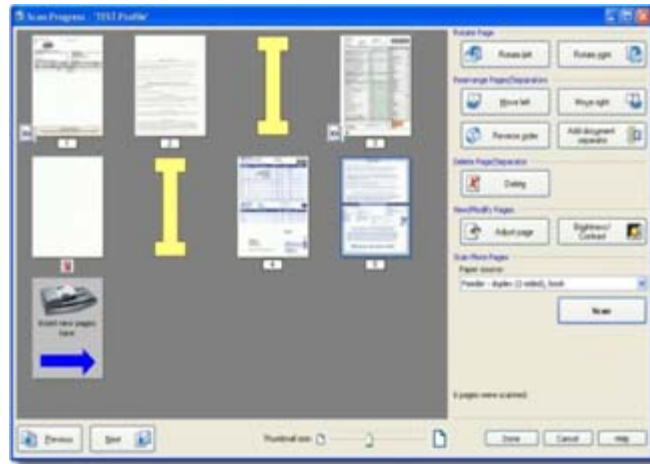
Implement an intuitive scanning solution for a variety of scanning and document management needs. From the drivers to the software and controls, the Scanjet Enterprise 7500 Flatbed Scanner and the robust suite of included applications are built for efficiency and ease-of-use.

HP Smart Document Scan Software 3.0

Simplify scanning tasks and automatically enhance images with HP Smart Document Scan Software 3.0. This TWAIN-based capture and routing software helps you easily scan and manage your document jobs.

As seen at right, the **Scan Progress** window opens when you start a scan, making it simple to complete the following tasks:

- View thumbnails of the pages as they are scanned
- Scan additional pages
- Rescan pages individually
- Edit pages individually to crop, rotate, and deskew the images
- Reorganize or delete pages
- Complete the scan and process the document



Improve workflow by using HP Smart Document Scan Software to create scan profiles for commonly used settings or actions. Then, easily assign profiles to the scanner's front panel for future use. Some profile settings include: page size and layout, auto-crop, color dropout, multi-feed detection, JPEG compression, auto-straighten, resize, edge erase, digital stamp, background filters, delete blank pages, batch separation, and page merge.

Take care of business with an array of document management capabilities. You can create profiles to automatically save scans to a shared drive, an email application, Microsoft SharePoint Server, or any application that supports command line architecture. Save scans in a variety of formats including PDF/A, PDF, Microsoft Word, TIFF, and JPEG—so they can easily be edited, emailed, or organized.

Nuance® PaperPort®

Create a personal archival and document management system out of the box with Nuance® PaperPort®.² A browser-type interface displays thumbnails of files on the system, so you can easily find and move documents. Drag-and-drop capabilities simplify filing of documents and photos. The software lets you easily convert hard copies into organized, digitized files and view, edit, send, and back up files in a wide range of formats.⁵

Nuance® PaperPort® makes it easy to:

- Organize and share files by converting them to PDF
- Import files from and export to a digital database
- Scan two-sided documents and send to programs
- View files without opening other applications
- Burn backup files to a disc

- Add annotations to documents without affecting the original file with handy annotation tools such as text, highlighter, sticky note, bookmark, and more

TWAIN, ISIS, and WIA drivers

Seamlessly integrate the scanner into existing document management software, using the included TWAIN, ISIS, or WIA drivers. The drivers initiate scanning from any compatible program installed on your computer, saving steps in the scanning process.

Kofax VirtualReScan Pro

Optimize scans on the first pass with Kofax VirtualReScan Pro. This image enhancement technology automatically adjusts the color and contrast of your scans, to produce greater OCR accuracy and more details in images, so you get clear, readable results every time. Even if your documents are dark or damaged, Kofax VirtualReScan Pro makes them usable again.

RELIABLE, TIME-SAVING features

Scan with confidence—HP Precision Feed technologies keep scan projects running uninterrupted. Easily monitor the status of your scanner using HP Web Jetadmin.

HP Precision Feed technologies

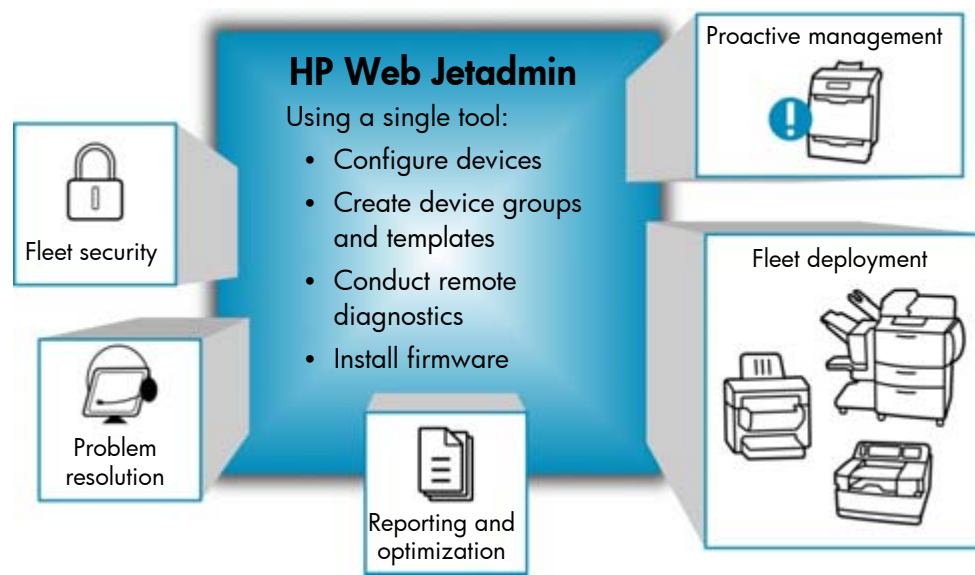
Confidently feed and capture scans—including mixed stacks of various media weights and sizes—with HP Precision Feed, a set of innovative technologies created to ensure a dependable on-ramp to your digital workflow. Count on reliable scanning of almost any document type thanks to these technologies:

- **A multiphase pick process** separates a stack of paper into increasingly smaller stacks, while **advanced separation** ensures only one page is fed through the device at a time.
- **Intelligent picking** minimizes document wear and tear while ensuring that pages process without interruption. First, the minimum amount of force required to pick a page from the stack is applied. If this amount of force is not adequate, the roller speed and/or pressure is adjusted.
- **Mixed stack handling** saves time—no more presorting input for scanning. The device is engineered to support a wide range of media types, while maintaining high scanning performance.
- **Ultrasonic multi-feed detection** helps ensure that all pages are scanned. Sound waves are used to verify that a single sheet has been separated from the stack for processing, helping eliminate the need to count the number of pages fed and make sure it matches the number of pages scanned.

In the event that the ADF is unable to pick a page, or if multiple pages are pulled into the paper path, the feeding process stops and the device notifies you of the error. Pages that have already been scanned are stored in memory, which means that you don't have to restart your scan from the beginning.

Industry-leading HP Web Jetadmin

HP Web Jetadmin is the simple, web-based peripheral management software that administrators around the world rely upon for remotely managing a wide variety of HP and non-HP printing and imaging devices. With advanced security features, you can be assured that HP Web Jetadmin and your supported peripherals are well protected.



NOTE Learn more about HP Web Jetadmin and download the software for free at www.hp.com/go/wja.

WORRY-FREE HP solution

HP's robust scanners are designed for individual and business users who require quick and easy results. They are convenient to use with one-touch functionality and offer the versatility to scan, copy, share, and preserve documents.

Legendary HP reliability

Count on all-day operation—the HP Scanjet Enterprise 7500 Flatbed Scanner is built to handle up to 3,000 scan jobs a day. By being certain of maximum uptime, you'll boost productivity and end frustration.

The product comes with a standard one-year warranty. Optional service pack upgrades are available for purchase, including extended warranty, next-business-day exchange service, and onsite support options.

Award-winning HP Total Care⁴

Because downtime can have serious business consequences, HP provides high-quality services that extend beyond the standard warranty and help you avoid unbudgeted repair costs. Benefits include reduced printing and infrastructure costs, maximized uptime, expert technical phone support, and predictable, consistent service delivery—even across multiple locations.

Recommended services:⁶

- **Next Day Onsite Service:** a technician delivers onsite service the next business day after the service call is received
- **Next Day Exchange Service:** next business day delivery of a permanent replacement, including door-to-door pickup and delivery

These services and additional coverage options can be purchased as:

- **HP Care Pack Services:** easy-to-buy, easy-to-use support packages
- **HP Contractual Services:** a comprehensive portfolio for maintaining maximum IT availability

For ordering information, see Appendix B on page 12.



A—TECHNICAL SPECIFICATIONS

Scanner type	Automatic document feeder (ADF); legal-size flatbed scanner
Scan technology	Charge Coupled Device (CCD)
Light source (scanning)	Light Emitting Diode (LED)
Speed¹	Color/black-and-white/grayscale: up to 50 ppm (pages per minute), up to 100 ipm (images per minute)
Duty cycle (daily)	Up to 3,000 pages per day
Scan resolution	Hardware: up to 600 x 600 dpi; Optical: up to 600 dpi
Output resolution dpi settings	75, 100, 150, 200, 240, 300, 400, 500, 600
Bit depth	48-bit internal/24-bit external
Grayscale levels	256
Media	
Input	100-sheet ADF
Custom sizes	ADF: 70 x 148 mm (2.75 x 5.8 in) to 216 x 864 mm (8.5 x 34 in) Flatbed: 25.4 x 25.4 mm (1 x 1 in) to 216 x 356 mm (8.5 x 14 in)
Standard sizes	A4, A5; letter, legal
Types	Paper (plain, inkjet, photo)
Weights	49 to 120 g/m ² (13 to 32 lb)
Scan input modes	Front panel scan to HP Smart Document Scan Software; HP Document Copy; software scan using HP Smart Document Scan Software; user application via TWAIN, ISIS, WIA, or Kofax VirtualReScan Pro drivers
Advanced features	Image enhancements such as blank page removal, crop, deskew, orientation; barcode detection; batch separation; document merge; HP Precision Feed technology
File formats	BMP, JPG, TIFF, TIFF (compressed), multi-page TIFF, PNG, PDF (normal, normal with images, searchable image-only, MRC), PDF/A, RTF, TXT, UNICODE, HTM, DOC, WPD, XML, XLS, OPF, XPS
Control panel	4-line LCD display, Tools button, Cancel button, Back button, OK and arrow buttons, Scan Simplex button, Scan Duplex button, Sleep button
Connectivity	Hi-Speed USB 2.0 port
Operating systems	Microsoft Windows® 7, Windows 7 x64, Windows Vista®, Windows Vista x64, Windows XP® Home, Windows XP Professional x64
Minimum system requirements	For Microsoft Windows 7 and Windows Vista: at least 1.3 GHz processor, 1 GB RAM For Windows XP: at least 1.3 GHz processor, 512 MB RAM For all systems: 300 MB (minimum) free hard disk space (80 MB drivers only), USB 2.0 port, CD-ROM drive, 1024 x 768 SVGA monitor, 16-bit color
Product dimensions (width x depth x height)	515 x 426 x 211 mm (20.28 x 16.77 x 8.31 in)
Weight	10.6 kg (23.37 lb)
What's in the box	HP Scanjet Enterprise 7500 Flatbed Scanner with automatic document feeder (ADF); Hi-Speed USB cable; power adapter with power cord; CD-ROMs with software (HP Smart Document Scan Software, Nuance® PaperPort®, I.R.I.S. Readiris Pro OCR, Kofax VirtualReScan Pro, EMC ISIS drivers, HP TWAIN driver); Setup and Support Guide
Warranty	One-year standard warranty; phone and web support included. Warranty may vary by country as required by law. Go to www.hp.com/support to learn about the HP award-winning service and support options in your region.

Environmental and power specifications

Environmental ranges	
Operating temperature	10 to 35° C (50 to 95° F)
Non-operating temperature	-40 to 60° C (-40 to 140° F)
Operating humidity	15 to 80% RH (non-condensing)
Non-operating humidity	15 to 80% RH (non-condensing)
Power specifications	
Power features	100 to 240 VAC (50/60 Hz) at 1300 mA input, 32 VDC at 1560 mA output
Power supply required	100 to 240 VAC (±10%), 50/60 Hz (±3%)
Power consumption ⁷	Maximum: 50 watts; Standby: 15.5 watts; Sleep: 3 watts ENERGY STAR® qualified models, see www.hp.com/go/energystar
Power certifications	IEC 60950-1: 2005 2nd Edition; national derivatives, associated voluntary and mandatory certifications: Canada (CSA), China (CCC), Russia (GOST), European Union (CE and Nemko GS), Taiwan (BSMI), USA (CSA NRTL); other Mexico (NOM)
Electromagnetic emission standard	Class B; EU (EMC Directive, EN 55022: 2006+A1: 2007, EN 61000-3-2: 2006, EN 61000-3-3: 1995+A1: 2001+A2: 2005, EN 55024: 1998+A1: 2001+A2: 2003), US and Canada (FCC Rules, FCC Part 15 Subpart B), Australia and New Zealand (SMA), China (CCC), Korea (KCC), Taiwan (BSMI), Russia (GOST)

B—ORDERING INFORMATION

Product	HP Scanjet Enterprise 7500 Flatbed Scanner	L2725A
Service and support	HP 3-year Next Business Day Onsite Exchange (physical) HP 3-year Next Business Day Onsite Exchange (electronic) HP 3-year Next Business Day Exchange (physical) HP 3-year Next Business Day Exchange (electronic) HP 3-year Return HP 3-year Standard Exchange (physical) HP 3-year Standard Exchange (electronic) HP 1-year Post Warranty Next Business Day Onsite Exchange HP 1-year Post Warranty Next Business Day Exchange HP 1-year Post Warranty Phone Assistance HP 1-year Post Warranty Standard Exchange HP Installation Go to www.hp.com/support to learn about the HP award-winning service and support options in your region.	U4938A U4938E U4937A U4937E UH257E UK003A UK003E UV256PE UV257PE HC128PE UV258PE UG837E
Software	HP Web Jetadmin (download for free at www.hp.com/go/wja)	
Accessories	HP 100 ADF Roller Replacement Kit	L2718A
Solutions	www.hp.com/go/gsc	
Supplies	ADF Roller Replacement Kit ADF 10-pack Cleaning Cloth Kit	C2718A C9943B

Use accessories and supplies specifically designed for the product to ensure optimal performance. To order the accessories and supplies listed here, go to www.hpshopping.com (U.S. only). If you don't have access to the Internet, contact your qualified HP dealer, or call HP (U.S.) at (800) 282-6672.

End notes

¹ Scan speeds measured at 200 dpi (black-and-white, color, and grayscale) using A4 and letter-sized paper.

² Nuance® PaperPort® is compatible with Windows 2000, XP, and Vista.

³ Download HP Web Jetadmin for free at www.hp.com/go/wja.

⁴ HP was awarded the 2010 Excellence in Service Operations certification from the Technology Services Industry Association (TSIA) for providing superior technical support and services in North America.

⁵ Supported file formats include: BMP, PCX, PCD, TIFF, Multi-page TIFF, JPEG, PICT, PSD, WMF, PPS, PPT, XLS, Microsoft Visio, TXT, HTML, and PDF.

⁶ Go to www.hp.com/support to learn about the HP award-winning service and support options in your region.

⁷ Power requirements are based on the country or region where the product is sold. Do not convert operating voltages or use with other voltages. Doing so might cause damage that would not be covered under the HP product warranty.



Adobe and Acrobat are trademarks of Adobe Systems Incorporated. ENERGY STAR and the ENERGY STAR mark are registered U.S. marks. Microsoft and Windows are registered trademarks of Microsoft Corporation. Windows Vista is either a registered trademark or trademark of Microsoft Corporation in the United States and/or other countries.

© Copyright 2010 Hewlett-Packard Development Company, L.P.

The information contained herein is subject to change without notice. The only warranties for HP products and services are set forth in the express warranty statements accompanying such products and services. Nothing herein should be construed as constituting an additional warranty. HP shall not be liable for technical or editorial errors or omissions contained herein.

To learn more, visit www.hp.com

4AA3-0883ENW, September 2010

